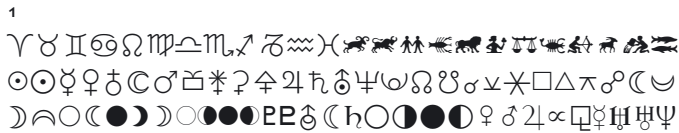


LINOTYPE ASTROLOGY PI | Linotype



LINOTYPE AUDIO PI | Linotype



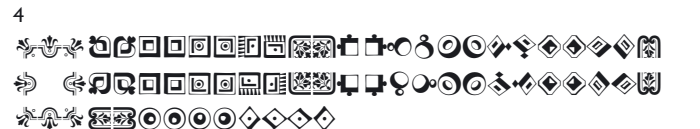
BORDER PI (1515-9) | Linotype



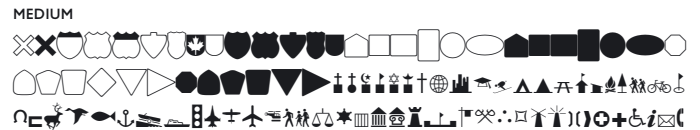
BUNDESBAHN PI | Linotype



CARAVAN | Linotype



CARTA | Lynne Garell



# C-G IMAGES & SYMBOLS

## CARTA (contd.) | Lynne Garell

MEDIUM



## CHEQ | John Renner

MEDIUM

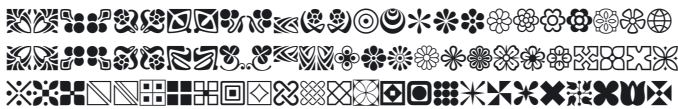


## LINOTYPE DECORATION PI | Linotype

1



2



## DIDOT | Adrian Frutiger

ORNAMENTS

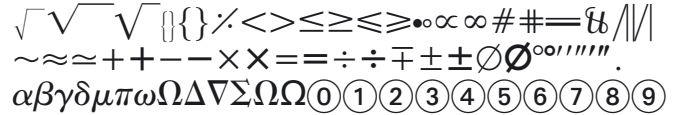


## EUROPEAN PI | Linotype

1



2



3



4



## LINOTYPE GAME PI | Linotype

CHESS DRAUGHTS



DICE DOMINOS



ENGLISH CARDS





# M-S IMAGES & SYMBOLS

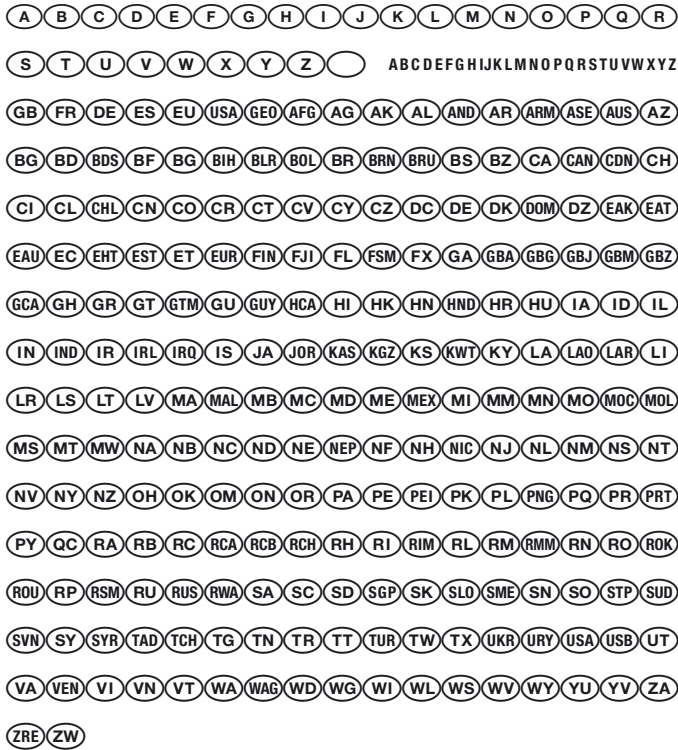
## MICR

MEDIUM



## NATIONAL CODES PI

UNIVERSAL



## NOTRE DAME | Karlgeorg Hoefler

ORNAMENTS



## POMPEIJANA | Adrian Frutiger

BORDERS



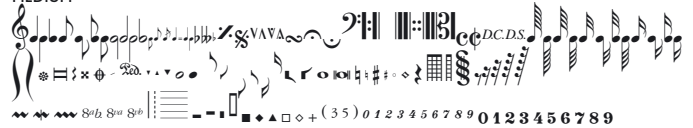
## RUSTICANA | Adrian Frutiger

BORDERS



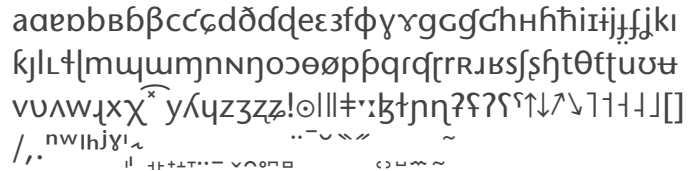
## SONATA | Cleo Huggins

MEDIUM

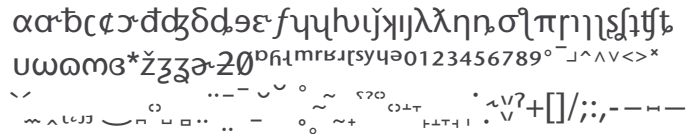


## ITC STONE PHONETIC | Sumner Stone & John Renner

SANS IPA



SANS ALTERNATE



SERIF IPA

